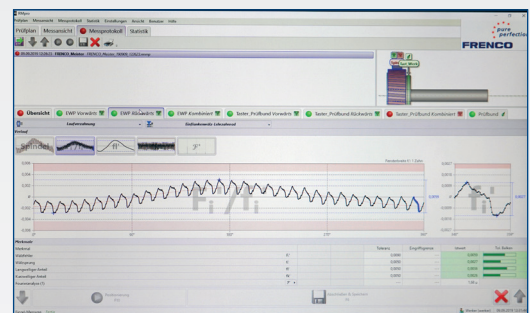




# SWP 30

One flank gear rolling inspection instrument for worms and worm gears

- Workpieces:** Worms and worm gears
- Characteristics:** One flank gear rolling inspection, Tooth-to-tooth deviation, total composite deviation and reverse clearance, Determination of single deviations, runout and tooth thickness range
- Accuracy:** Smallest testable workpiece tolerance  $T_{\min} \geq 10 \mu\text{m}$ , determined with method 2 on the master part.
- Solution:**
- high precise granite base
  - compact frame incl. electronics and PC
  - Linear scales for axis distance and measuring plane
- Software:**
- user-friendly software RMpro
  - graphical display of values
  - extensive options, data export, various languages
- Special features:**
- Load capacity 80 kg
  - ergonomic arrangement of controls
  - widely adjustable, 30 mm opening path



Technical Data	
Centre distance	30 – 300 mm
Max. diameter of specimen	400 mm
Adjustment of measuring force	magnetically adjustable
Length x width x height	1185 mm x 620 mm x 1500 mm
Weight	750 kg